



Kdb Digital Syllabus for searching courses

<https://kdb.tsukuba.ac.jp/>

Please choose more than 8 courses in total, ideally 4 - 5 courses should be chosen from your first choice of desired School/Degree Program. This course selection information will be used to coordinate your affiliation.

The top screenshot shows the search interface for Undergraduate Students. It includes fields for Academic year (202X), Term (Select Term/Module), Weekday (Select Day), Period (Select Period), Classroom (<Undecided>), Course Catalogue (Course Catalog for Undergraduate Students), and Foundation/Major Subjects (Foundation/Major Subjects). It also has checkboxes for 'Conducted in English' and 'Courses open to Exchange student'. The bottom screenshot shows the search interface for Graduate School Students, with similar fields but 'Course Catalog for Graduate School Students' selected. Both screenshots have red boxes and numbers 1-4 highlighting key search options.

① Academic Year at UT

Information of the next academic year (April to March) will be offered at the beginning of April. Please search by most recent year

② Term/Module

Select Term/Module you plan to enroll in

③ Course catalogue

<For Undergraduate Students>

1. Select “Course Catalog for Undergraduate Students”
2. Select “Foundation/Major Subjects”
3. Select School and College
(or 1. Select “English Program Course Catalogue”
2. Select the one related to your study field)

<For Graduate Students>

1. Select “Course Catalog for Graduate School Students”
2. Select Graduate School/Degree Program (and Subprogram if any)

④ Search Words

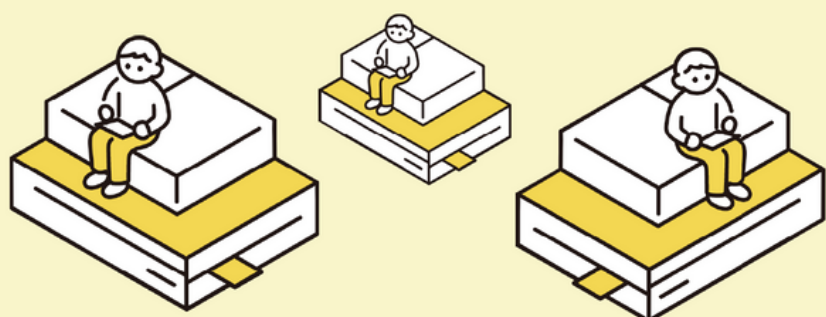
Check “Courses open to Exchange Student”
Check “Conducted in English” (if Japanese proficiency is poor.)

※“x” mark means that the course is not available.

To download the list of courses, please navigate to the bottom of the webpage.

※Note

- The number of courses offered to exchange students may differ by each Schools/Programs.
- Official course registration will be done after arrival at Tsukuba. This course selection does not guarantee you can take those courses.
- As a general rule, courses marked with “x” are not available. However, if certain condition or requirements (e.g. Japanese proficiency) are met, you may be allowed to take them. Please contact lecturer during the period of registration, after arrival.



If you want to find the school and college or degree program at the University of Tsukuba, please refer to the lists below:

- List of Schools and Colleges (For Undergraduate Student)
<https://www.tsukuba.ac.jp/en/academics/organization-ug-list/>
- List of degree programs (For Graduate Students)
<https://www.tsukuba.ac.jp/en/academics/g-list-since-ay-2020/>

****Exchange student is unable to take the course offered by Degree Program in Business Sciences / Law School Program / MBA Program in International Business.**